



Waldorf Flats, #102  
676 Summit Avenue, Saint Paul, 55105



## Perfection in Every Detail.

Live on historic & charming Summit Avenue without giving up any modern conveniences of a new home. This stunning first- floor unit is the premier unit at the boutique, award-winning Waldorf Flats.

This corner unit has been fully restored using original fireplace mantels, hardwood floors, and solid oak doors. Features include quality baths, washer/dryer, central air, 2 car garage (the only with 2!) & tons of built-in storage.

List Price - \$645,000

  
Amy Sperling REALTOR

More online at [AmySperling.com](http://AmySperling.com)  
Call for a showing (651) 253-2525

## Property Details

Total Interior Size:	2,267sf
Master Suite:	13x13
Second Bedroom:	10x13
Living Room:	19x27
Dining Room:	9x12
Kitchen:	11x12
Laundry Room:	9x10
Balcony:	7x9
Lower Lvl Family Rm:	19x26
Parking Garage Stalls:	2
Taxes (2009):	\$8,108
Assoc Dues (2009):	\$634
MLS #:	3687630

Dues include: Heat, water, sewer, trash/snow removal, landscaping, common area maintenance, and hazard insurance.



The Ideal Entertaining Venue with Wet Bar & Wine Cellar



Hallway for Art Collection



Lower Level Wine Cellar

## Special Features

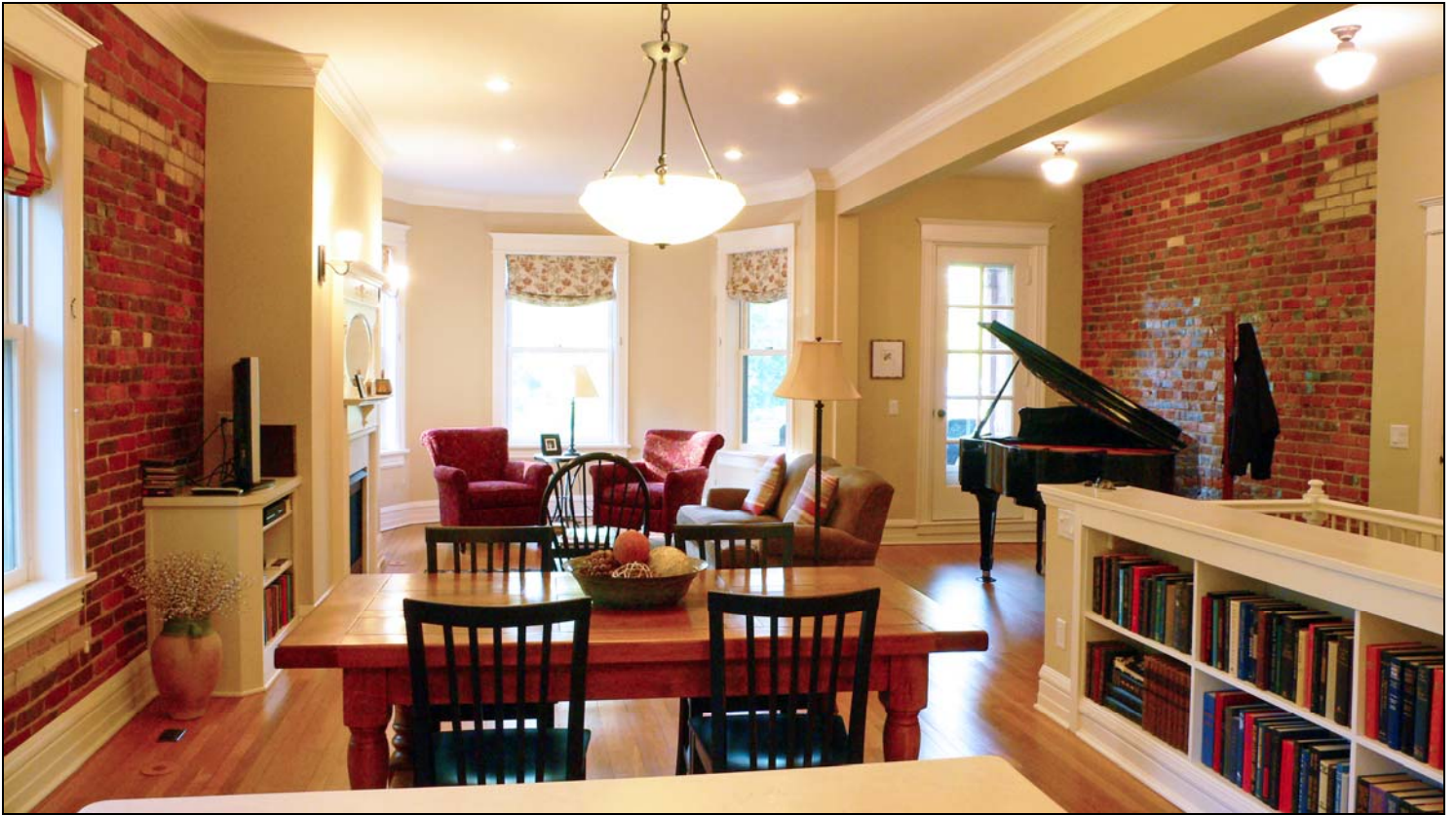
- 2 Levels w/Lower Level Wet Bar & Wine Room
- Lovely Veranda Overlooking Summit Avenue
- Exposed Brick, Large Windows, 9' Ceilings
- Hardwood Floors Including in Bedrooms
- A "Cooks Kitchen" with Modern Appliances
- 2 Gas Fireplaces with Original Decorative Mantles
- Original Woodwork throughout the Home
- 2 Assigned Garage Stalls & Storage Included

## Amenities at Waldorf Flats

- Elegant Entry with True "Sense of Arrival"
- Located in the Heart of Historic Crocus Hill
- Fully Equipped Exercise Room
- Longest Historic Street in the Nation
- Walk to Trendy Retail & Restaurants
- Gorgeous Ornate Red-Brick Facade
- Video Surveillance throughout Building
- Find Out More at [www.WaldorfFlats.com](http://www.WaldorfFlats.com)

Hoffman Parkin, Ltd. does not guarantee accuracy of square footage, room sizes, or other information concerning the condition or features provided by seller or obtained from public records or other sources. Buyer is advised to independently verify accuracy of that information through personal inspection & with appropriate professionals. All content herein, including images is property of Hoffman Parkin, Ltd. and may not be used without permission. Copyright © 2009 Hoffman Parkin, Ltd. All rights reserved.





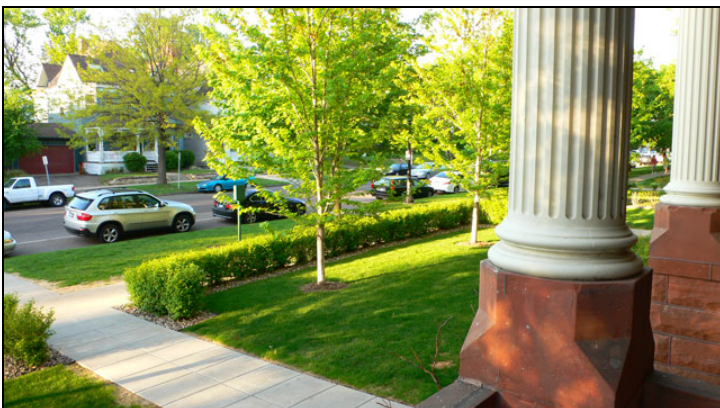
Hardwood Floors and Exposed Brick throughout the Home



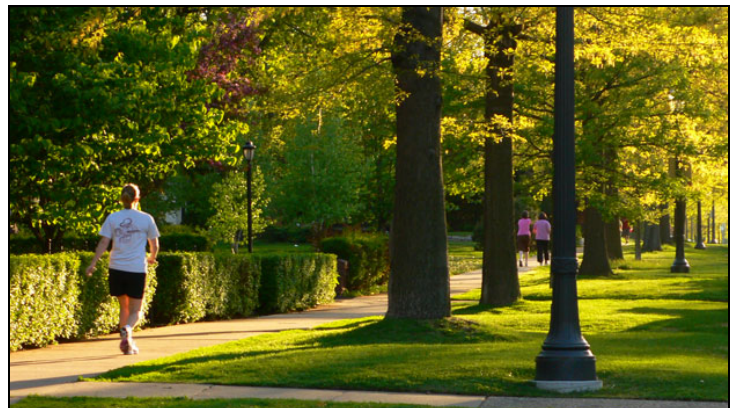
Spacious Master Suite with Large Closets



Large Private Master Bath



View from the Private Balcony



Located on St. Paul's Beautiful Summit Avenue



## Take a Closer Look. . .



It is rare to find a home with so much attention to detail. While paying homage to the historical significance of the architecture, no expense has been spared in providing state-of-the-art conveniences. The result is a distinct understated elegance.

Take a closer look online or, better yet . . .  
call Amy for a showing (651) 253-2525.

explore at:  
[AmySperling.com](http://AmySperling.com)