



A Mid-Century Oasis.



1560 Hartford Ave, St. Paul 55116

This wonderful classic 1950's rambler is located on a beautifully landscaped double lot in Highland Park. Interior features include gleaming hardwood floors, 2 stone fireplaces, a large functional kitchen, elegant windows, retro chic baths, and an amazing finished basement with a built in bar - perfect for entertaining!

The incredible all-season gardens in the backyard are a gardener's dream. Added features include tons of storage and a 2-car heated garage.

List Price - \$299,999


Amy Sperling REALTOR

More online at AmySperling.com
Call for a showing (651) 253-2525

Property Details

Total Interior Size:	2850sf
Master Suite:	13x17
Second Bedroom:	12x12
Lower Level Bedroom:	10x16
Kitchen:	11x14
Living Room:	15x20
Dining Room:	10x13
Family Room:	24x33
Bathrooms:	2
Garage Stalls:	2
Year Built:	1951
Taxes (2009):	\$4,014
MLS #:	3846657



Sunny Kitchen with Breakfast Nook



Oversized Bay Windows Bring the Outside In



Kitchen Features Tons of Storage



Fireplace & Hardwood Floors in Living Room



Large Finished Basement with Built-In Bar

Hoffman Parkin, Ltd. does not guarantee accuracy of square footage, room sizes, or other information concerning the condition or features provided by seller or obtained from public records or other sources. Buyer is advised to independently verify accuracy of that information through personal inspection & with appropriate professionals. All content herein, including images is property of Hoffman Parkin, Ltd. and may not be used without permission. Copyright © 2009 Hoffman Parkin, Ltd. All rights reserved.



Back Yard is a Gardener's Paradise with Mature Plantings, Meandering Courtyards, and Hidden Spaces.



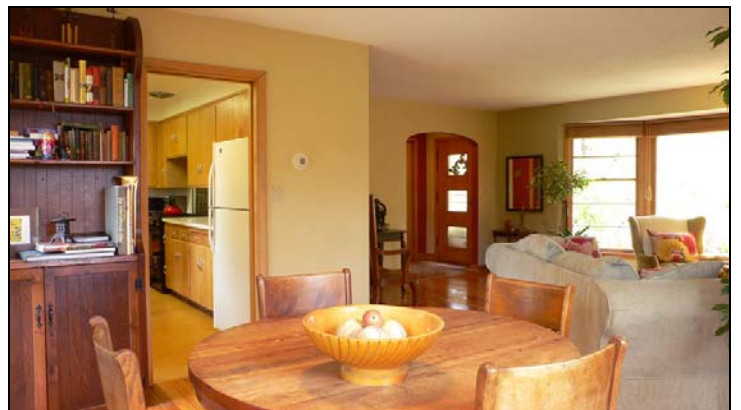
Large Master Suite with 2 Walk-in Closets



Charming Retro Bathroom with Great Colors



2nd Bedroom/Office Space on Main Level



Formal Dining Area



Take a Closer Look. . .



This Mid-century Modern Home is a wonderful blend of classic retro chic and modern convenience. The lush gardens that surround this home create a private oasis inside.

Take a closer look online or, better yet . . .
call Amy for a showing (651) 253-2525.

explore at:
AmySperling.com