

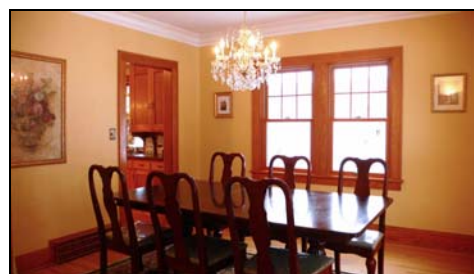
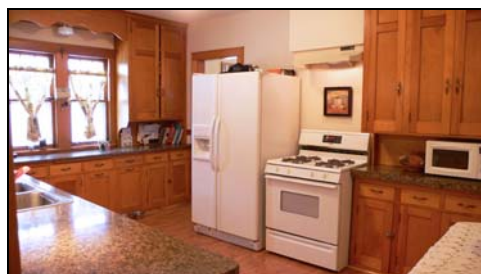
  
Amy Sperling REALTOR



Arts & Crafts for Modern Living

1134 Palace Ave, St. Paul

1134 Palace Ave, St. Paul, 55105



4 Bed + Sunroom | 3 Bath | 2,562sf

Every inch of this stunning Arts and Crafts home has been updated to incorporate modern conveniences, while maintaining all of its original charm. The perfect woodwork, hardwood floors, and spacious room design create a home with great flow. The lower level entertainment room & built-in office is outstanding. The spacious top-level master suite is a gorgeous and sunny retreat. New 3-car garage, too!

List Price - \$385,000

AmySperling.com | (651) 253-2525

#### PROPERTY DETAILS

Year Built:	1926
Total Interior Size:	2,562sf
Living Room:	13x20
Dining Room:	11x12
Kitchen:	11x15
Master Bedroom:	15x28
Bedroom2:	12x12
Bedroom3:	12x12
Bedroom 4:	9x10
Lot Size:	50x125
Taxes (2009):	\$4,268

Hoffman Parkin, Ltd. does not guarantee accuracy of square footage, room sizes, or other information concerning the condition or features provided by seller or obtained from public records or other sources. Buyer is advised to independently verify accuracy of that information through personal inspection & with appropriate professionals. All content herein, including images is property of Hoffman Parkin, Ltd. and may not be used without permission. Copyright © 2010 Hoffman Parkin, Ltd. All rights reserved.





The Entertainment Center to End All Entertainment Centers



Amazing Built-in Office Space in Lower Level



Beautifully Updated Bathrooms Throughout



Huge Top-Level Master Suite with Skylights



Two-Level Three Car "Garage-Mahal" with Storage



## Need Help Finding a Home?

Your options may seem overwhelming. That's where Amy can help. Amy is a Realtor<sup>®</sup> specializing in unique and historic urban homes throughout the Twin Cities. She has the tools and insight to help you find you the right home at the right price.

## Selling Your Home?

If you are considering selling your home, Amy can help. As a Realtor<sup>®</sup> specializing in urban single-family homes, townhomes, and condos, she has unique insight into neighborhood-focused sales and knows what it takes to aggressively market your home. Contact Amy for RESULTS when you list.

## Choose a Specialist.

Amy has been selling distinguished homes and award-winning projects for over 16 years. With millions in sales and countless happy customers, Amy provides her clients a wealth of real estate experience. Not all agents are created equal.

Amy is a Broker and Co-Owner of Hoffman Parkin Urban Realty, a boutique real estate brokerage specializing in distinguished urban homes the Twin Cities Metro Area. Amy truly understands these local markets, which is a huge advantage to you. She can steer you to the best investments and away from bad ones.



Amy Sperling, Realtor<sup>®</sup>

(651) 253-2525 | Amy@AmySperling.com

[www.AmySperling.com](http://www.AmySperling.com)

a Broker Associate with . . .

**Hoffman  
Parkin**  
URBAN ★ REALTY